



Grace Pantry Building (formerly Parish Offices) - "More Than Enough" Mural by Becky Steel

"The most important one," answered Jesus, "is this: 'Hear, O Israel: The Lord our God, the Lord is one. Love the Lord your God with all your heart and with all your soul and with all your mind and with all your strength. 'The second is this: 'Love your neighbor as yourself.' There is no commandment greater than these."

Mark 12:29-31

The Power of a Small Church... at Grace Episcopal Church in

Alvin



- Our first Holy Experiment
- This is where it all started – a little blessing box
- The early attempt at feeding our neighbors
- Empty more often than full
- It was the extent of our community outreach
- It was the beginning of our journey
- That empty blessing box was a catalyst that made us start to listen to our community

The Journey Begins July



- The common theme we heard was FOOD INSECURITY
- 51.7% of Alvin school kids receive Title 1 Free or Reduced-Cost breakfast and lunch
- Nearly 60% of AISD schools are designated Title 1 Campuses
- There is an underserved population of 200-250 low-income and homebound senior citizens
- There is an unserved community of 150-200 unhoused neighbors going hungry

“We need to find a bigger box...”



- Through community networking found a Houston Food Bank Partner seeking site for Mobile Food Pantry – MFP
- First MFP December 6, 2019 15,000 lbs fresh produce and non-perishable items
- Continued weekly on drive-through basis during pandemic, we saw 400 families/week
- Currently serve 225 families every Thursday and 85 home deliveries
- Blessing Box & Fridge 60-100 visitors daily

Fast Forward...Present Day



- Since December 2019 approaching **2.5 million pounds** given away
- **18,456** families served – over **55,000** people
- **21,792** volunteer hours logged
- Now receive **two tractor trailers/week**

- Blessing Box & Blessing Fridge with Warming Stations – **60 - 100 visits/day**
- **Seven-Day-A-Week** Continuous Operation
- Office Space Converted to Mini-warehouse feeds into Box & Fridge
- Homebound Deliveries to **85 families/week**

Community Partnership In

Action

Mobile Food Pantry & Back-2-School Drive-Thru

- Fresh Fruit & Produce
- Backpacks/School Supplies*
- Free Haircuts**
- Drug Awareness Info

Saturday, August 6th

IN ASSOCIATION WITH
houston 
foodbank
Filling pantries. Filling lives.

9 AM – 12 PM

200 W. Lang St.
(Btwn. Hardie & Hood St.)

Alvin, TX



Free Books from



Calvary Episcopal Church,
Bastrop, TX



Friendswood, Texas



*600 Backpacks, First Come First Served, Limit 4 per car

** Hair must be washed, stylists reserve right to refuse service

July 2022 Grace Became A Full Fledged Houston
Food Bank





- Bay Area Council on Drugs and Alcohol - \$10,000
- Episcopal Seniors Foundation \$35,000
- EDOT Vitality Cohort Mission Funding \$20,000
- The Shepherd's Nook - \$11,500
- Episcopal Church Women - \$5,000
- United Way of Brazoria County - \$12,000
- UTMB Health \$1,000
- Alvin Sunrise Club - \$2,000
- Rotaru Club of Alvin - \$2,000

These generous grants and donations have enabled us not only to keep our pantry shelves stocked but to purchase equipment needed such as refrigerators, freezers, dollies & carts, tables, storage building, shade tents, street fans, and much more

Partners In The Community - The Catholic Daughters

The Catholic Daughters of St. John the Baptist Catholic Church joined us in ministry in April 2023. They prepared 2,521 meals to share with our unhoused neighbors.

So far in 2024 they have dropped off over 2,000 meals for us to hand out. So they are on track to help with 10,800 meals this year.



Partners In The Community - Jolly Farms Chicken

Here in Alvin, Jolly Farms is a chicken farm "offering certified free-range and pastured chickens" that are "organic and non-GMO".

Since July 2022, Jolly Farms has lovingly donated 12,565 pounds of frozen chicken. They are proud partners of our ministry.





- The Food Ministry has become the primary avenue for attracting new members to Grace
- Since 2022, 40 people confirmed and received – all were touched in one way or another by the Food Ministry.
- Since 2019 over 75 individuals or families have chosen to call Grace their spiritual home
- We call our weekly Mobile Food Pantry “**Church In The Street**” complete

Church In The Street Thursdays – 9 AM





Feeding Souls Feeding the Community

Where We Are Today

- A thriving, revitalized congregation lovingly serving our neighbors
- The Food Ministry has grown beyond our imagination
- Requires full-time operational attention
- Day to day operations of the Food Ministry, including the community networking and fundraising efforts rest with the Community Missioner

Where we want to go from here

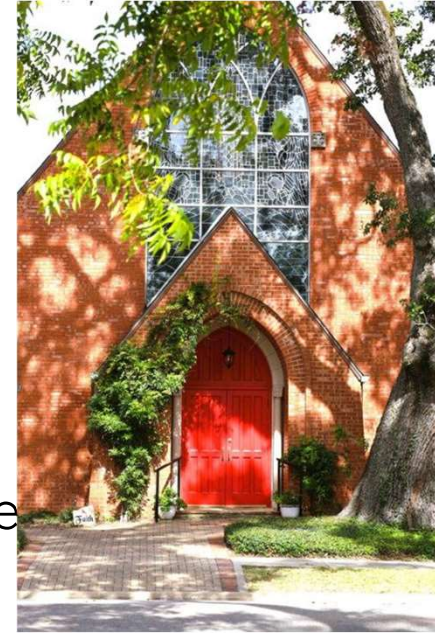


- Grow our distribution capacity from 540,000 pounds/year to 1.5 million pounds by 2025
- During that time period grow network of local partner organization that contribute financially from 10 to 20
- Increase new church membership by 30 individuals or families per year
- Add a weekly shower trailer ministry and start mini-pantries at ACC & MG
- Help other churches or organizations beyond Alvin establish similar ministries

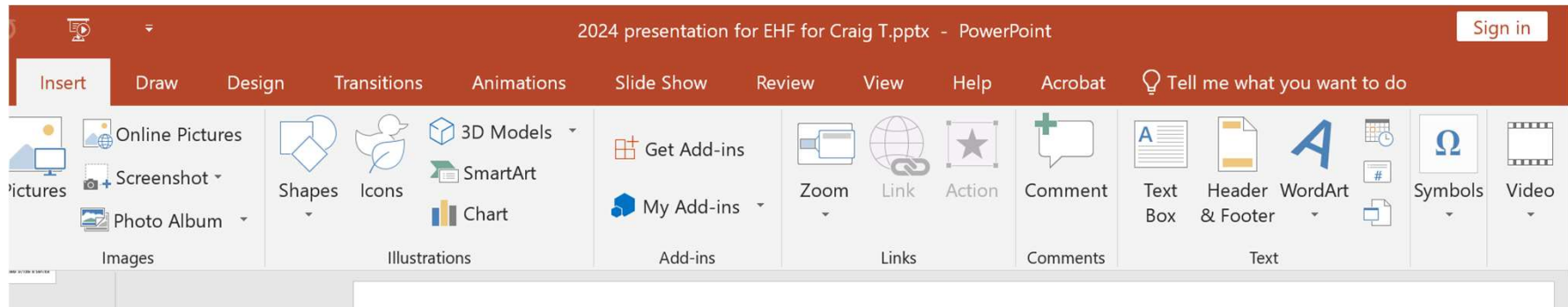
In Closing...

The power of the small church

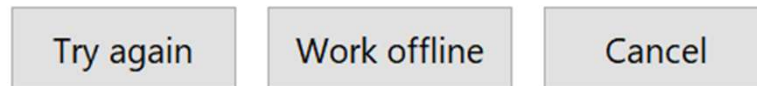
- Small churches are the backbones of most dioceses.
- We are nimble and able to respond quickly.
- Many small churches have been present in their communities for a long time therefore can be trusted.
- Most are scrappy-we know we can't do it alone so we ask for help. We are great collaborators.
- The ministries God calls us to we do with our hearts and souls.
- Therefore we have power to transform a community.



This is the slide where I would like to insert the online video <https://vimeo.com/894579414>



!!ERROR!!



This pops up

But when I click here to insert online video

**THANK YOU FOR YOUR TIME
TODAY!**



Visit us at
gracechurhalvin.org